



KITCHENATION

———— Together We Create



Outline



01

Aim / Mission

02

Few words about us

03

Brand Story

04

Services

05

How we do !!

06

Product Range

07

Why Choose Us

08

Our Associate

09

Kitchenation Showroom Display

10

Some works we have done

11

Recognitions

“

To provide our customers with quality furniture featuring practical functionality without compromising the design and ergonomics yet keeping everything reasonably affordable.

”

Aim | Mission



Few words about us...

Kitchenation is a one stop modular furniture company providing the customers with fascinating designs and exemplify optimum utilization of available space.

The word 'modular' is derived from the word modules which are standardized and independent units that can be used to construct a more complex structure. These modules (*commonly called cabinets*) are the basic component of any modular furniture. These modules of different shapes and sizes; each having its specific position; combines together to form what we call as a modular kitchen / furniture. We, at Kitchenation, strongly believe in the concept and it is represented in our logo as well.

The orange rectangles represent the different spaces in your home, your life with all its vitality, excitement and warmth. Nestled in the south east corner is the rectangle in green, the colour of life, freshness and fertility. This represents your kitchen. According to vastu shastra, south east corner is the ideal location for kitchens. The typeface is in black, the colour of strength and solidity.

Kitchen is the heart and soul of any home and we assure its vital functionality. We, at Kitchenation; keep "the queen of the kitchen" in mind while designing any product and strictly follow the kitchen ergonomics. It is then implemented by our team of accomplished craftsmen. The raw materials used in the process come from a cluster of world renowned manufacturers.





Brand Story

Abbas Johar | Abizer Baroodwala
Director and Co-founders

Having met at an IIT coaching center in Kota turned best buddies shared the common dream of being entrepreneurs. After graduating in the field of engineering from their respective streams Abbas started helping his dad in his business whereas Abizer took a job in a software company to taste the corporate world. But the thirst of entrepreneurship was not quenched; so one day they left the comforts of their homes and came to Indore. Having come from a background of property and construction in their parents business they knew the immediate need of any person after having their dream home was a kitchen and hence they went ahead to co-founding a company aimed to provide their customers with their dream kitchens.



Starting humble from a 500 sq. ft. kitchen display gallery to expanding the business multiple times in 5 years and experience of having more than **250 kitchens** installed across the state of Madhya Pradesh, Maharashtra and Rajasthan. They aim to set up Kitchenation as a well known brand with its stores across the country. Kitchenation's main ideology is to provide their clients with quality products and services in the utmost professional manner and hence our customer say " Happiness Installed professionally "

Services

Customized Modular Kitchen Solutions

Get your kitchen Tailor made as per your Requirements, designs, sizes, materials, hardware fittings and accessories.



Customized Modular Wardrobes Solutions

Choose from a range of Pre-designed 47 internal design templates with more than 50 door design options combined to suit your space and lifestyle.

Pre-designed Bedroom Furniture Solutions

Whether you need a ready to install Bedroom furniture with preset Bed (4 internal storage options), side table, dresser, wardrobe and TV Units or customize the overall mood with the same theme; we have got it all covered.



Built-in Kitchen Appliances

Fully loaded Built in Gourmet Kitchen Appliances from world class brands that can be procured through us either separately or along with the kitchen.

Retail Interiors

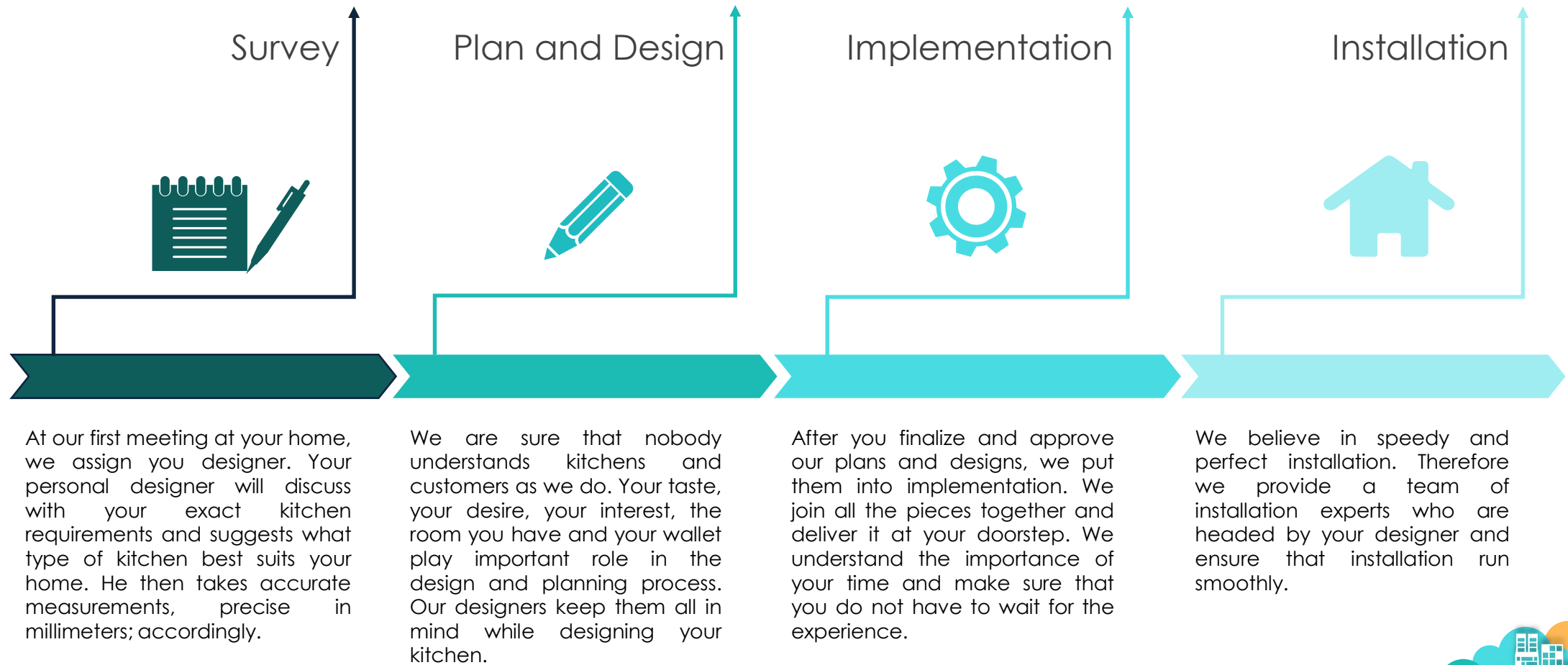
- Zodiac Clothing Co Ltd
- Reliance Gems and Jewels Limited
- Reliance Digital Retail Ltd (CDIT)
- Future Group (Holi) rollout plan
- Harry Winston
- And Many More.. 😊



Hospitality Solutions

- Mahindra & Mahindra Guest House in Chennai
- Yashwantrao Chauhan Maharashtra Open University Hostel
- Ginger Hotels , India
- Ramada Hotel Apartments, Dubai
- Hotel Best Wester, Alabama, USA
- And many more.. 😊

How we do !!



Product Range

1. Gurjan Ply
 2. BWP Ply
 3. BWR Ply
 4. HD-HMR
 5. MDF
 6. **Particle Board** (*Only Available for Wardrobes and Bedroom Furniture*)
- 7 Internal colour options with normal PVC or Dust-strip Edge band Available



Base Materials



Finishes



1. **Laminate** : Available in MDF, HD-HMR, BWP and Gurjan ply and Block board
2. **PVC Polymer** : Available on MDF and HD-HMR. Routed Design options Available
3. **ARPA Laminate** : Available on MDF, HD-HMR, BWP and Gurjan ply and Block board.
4. **Fenix – Super Matt Laminate** : Available on MDF, HD-HMR, BWP and Gurjan ply and Block board
5. **Rehau – RAUVISION (Crystal and Brilliant)** - Available on MDF,HD-HMR and BWP Ply.
6. **Back Painted Acrylic – Metallic** : Available on MDF, HD-HMR, BWP and Gurjan Ply.



Finishes



7. Acrylic Products :

- Acrylic - 2 Side - Available on Russian Birch Ply
- Acrylic - SR - Available on Russian Birch Ply
- Acry - Glass - Available on 20mm BWP Ply
- Acry - Glaks - Available on Russian Birch Ply in Glossy or Matt Finishes

8. UV Lacquered :

- Alvic : Available on MDF only
- One Skin : Available on MDF only
- Egger : Available on Particle Board, MDF and 39MM Honeycomb



Finishes



9. Back Painted Glass Shutter

- Preston : Available on MDF, BWP and Gurjan Ply
- Bella : Available on MDF, BWP and Gurjan Ply
- Sandwich : Available on MDF, BWP and Gurjan Ply

10. Solid Wood :

- PU Matt (2 Side) - Available on 25MM White Ash
- Stain (2 Side) - Available on 18MM / 25MM Beech Wood and 25MM White Ash
- Dead Matt Stain (2 Side) - Available on 18MM / 25MM Beech Wood and 25MM White Ash
- Louvered Shutter : Available on 18MM / 25MM Beech Wood and 25MM White Ash
- BWP - Veneer with Fleece Backing - Available on 18MM / 25MM Beech Wood and 18MM / 25MM White Ash



Finishes



11. Veneer (25MM) :

- Smoked Satin : Available on MDF, HD-HMR, BWP ply and Blockboard
- American Walnut : Available on MDF, HD-HMR, BWP ply and Blockboard

12. Glass Panels :

- Extra clear Back Painted Glass (Toughened / Non-Toughened) :3mm/4mm Glossy, Pearlised/Metallic, Super Matt
- Extra Clear Frosted Glass - 4mm Toughened only
- Extra Clear Glass - 4mm / 8mm / 12mm Toughened and Non-Toughened
- Tinted Glass - 4mm Grey/ Brown



Finishes



13. PU Paint

- Glossy : Available on MDF, HD-HMR, BWP and Gurjan ply and Block board
- Matt : Available on MDF, HD-HMR, BWP and Gurjan ply and Block board. Routed design option available
- Velvet : Available on MDF, HD-HMR, BWP and Gurjan ply and Block board
- Pearl/Metallic : Available on MDF, HD-HMR, BWP and Gurjan ply and Block board
- Bush Hammered : Available on MDF, HD-HMR, BWP and Gurjan ply and Block board
- Dazzle : Available on MDF, HD-HMR, BWP and Gurjan ply and Block board
- Super Matt : Available on MDF, HD-HMR, BWP and Gurjan ply and Block board





Designer Shutters

1. PU Painted :

- Dunedin
- Dunedin with 4MM toughened glass Sandwich
- Hamilton
- Bruges
- Charleston
- Lima
- Alice

2. Laminate

- Kyoto

3. Cornice and Pelmet

- PVC Polymer : Available in MDF and HDF
- PU Paint : Available in MDF and HDF
- Solid Wood : Stain or PU Painted on Beech wood / White ash





Profiles

1. Shutters

- Fabia
- Aldo
- Carlo
- Sabrina
- Gian

2. Handles

- G profile : with / without end cap and Normal finish, PU Matt Painted, Pu Metallic Matt Painted
- J profile Shiny : Normal finish, PU Matt Painted, Pu Metallic Matt Painted
- L Profile shiny : Normal finish, PU Matt Painted, Pu Metallic Matt Painted
- Gola Profile : Normal finish, PU Matt Painted, Pu Metallic Matt Painted

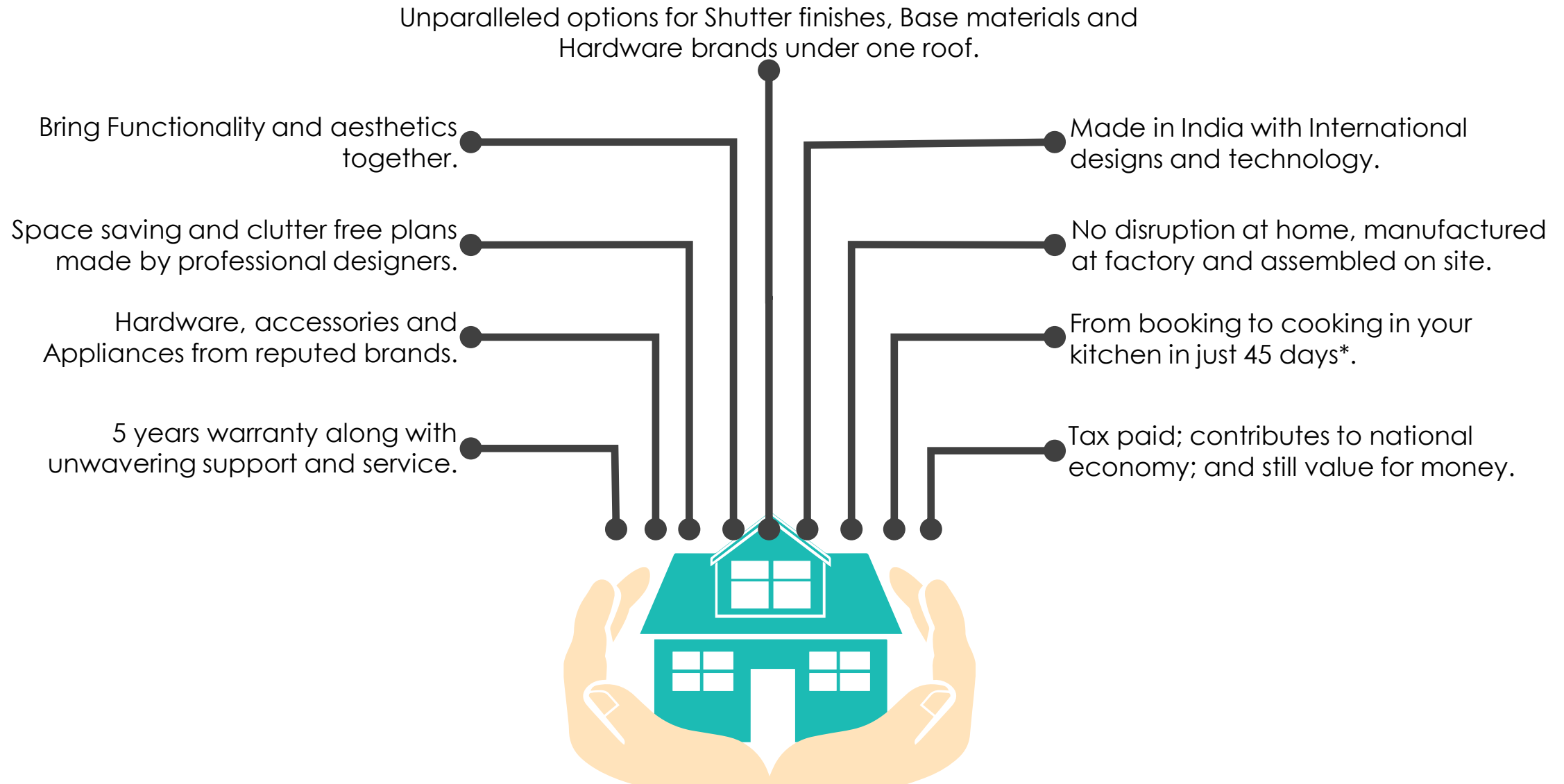


Kitchen Accessories :

1. Plate Rack
2. Spice Rack with Drawer
3. Smith Glass Shutter
4. Wall Crockery Unit
5. Janet Open Cabinet
6. Marvel Designer Filler
7. Kiwi Designer Filler
8. Designer Hood
9. Wooden Knobs
10. Rolene Wall Shelf



Why Choose Us !!





Indoline Industries Pvt. Ltd.

- Established in 1989 at Nasik, Maharashtra.
- Developed with resident experts from Italy.
- Over the years, expanded to institutional fixtures like hostels, business parks, hotels and hospitals, meeting huge demands with its unique, specialized and immaculate crafted designs.
- Fully integrated state-of-art manufacturing facility spread across 1,20,000 sq. ft.
- A host of multi-axis CNC machines networked on computer-aided manufacturing
- Heavy customization possible thanks to in-house capabilities
- Environment conscious, with GREENCO certification.
- ISO certified company

Our Associate



Manufacturing Capabilities



Indoline Showroom Display



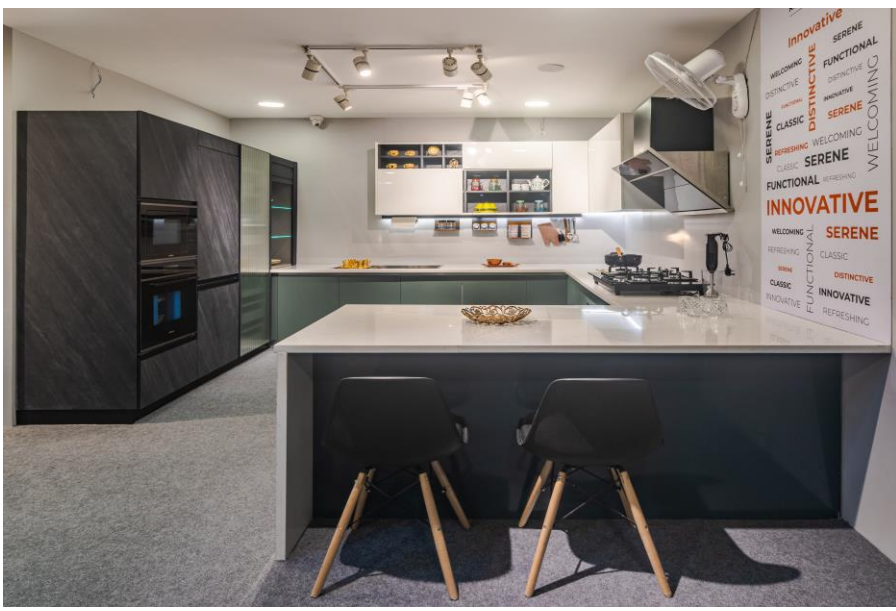
Indoline Showroom Display



Kitchenation Showroom Display



Kitchenation Showroom Display



Some Works We Have Done

- **Dr. Sunita Shinde**
Saket Nagar, Indore
- **Mr. Swapnil**
Scheme No. 78, Vijay Nagar, Indore
- **Mrs. Archana Vijayvargiya**
Sky Luxuria, Nipaniya, Indore
- **Mr. Rohit Bansal**
Mangal Murti Nagar, Navlakha, Indore



Some Works We Have Done

- **Mr. Gagan Agarwal**
Apollo DB City, Nipaniya, Indore
- **Mr. Viabhav Sahu**
Casa Greens, Talawali Chanda, Indore
- **Mrs. Ishaq Tinwala**
Spring field Towers, Nashik
- **Ms. Anubha**
Office Pantry - Scheme No 78, Vijay Nagar, Indore





Recognitions





- Appointed as a **Premium Dealership** by Indoline
- Awarded **Platinum Partnership** by H'A'FELE Appliances

For Enquiries



KITCHENATION
— Together We Create

 Plot no 156, PU4, 3rd Floor, Above Kohler Showroom,
Behind C21 Mall, Vijay Nagar,
Indore, (M.P) PIN-452010

 +91 731 4024184



www.kitchenation.in



sales@kitchenation.in



[kitchenation](https://www.facebook.com/kitchenation)



[kitchenation Indore](https://www.instagram.com/kitchenation_indore)



